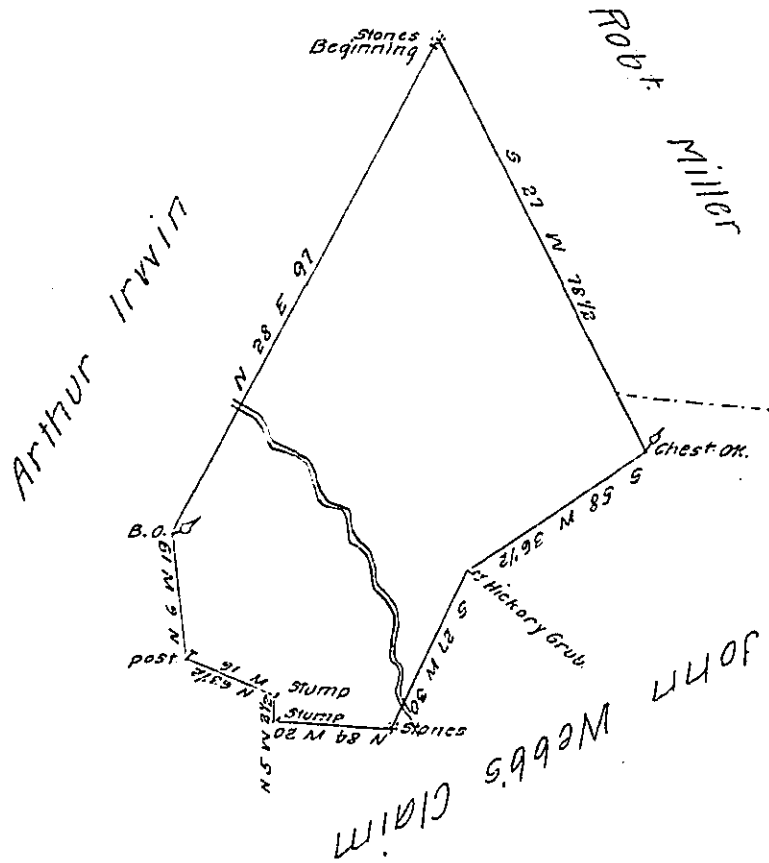


FORM NO 1.

Course & Dist.	N	S	E	W
S 27 E 78 1/2		69.9	35.6	
S 58 W 36 1/2		19.3		30.9
S 27 W 30		26.7		13.6
N 84 W 20	2.1			19.9
N 5 W 2 1/2	2.			.2
N 63 1/2 W 16	7.1			14.3
N 6 W 19	18.9			2.
N 28 E 97	85.6		45.5	
Thos Warren	115.7	115.9	81.1	80.9



A draught of a tract of land Situate in Newbury township in the County of York. Surveyed the 7th day of September 1784 For Thomas Warren in pursuance of a warrant granted him bearing date the first day of July last. Containing twenty eight acres & the usual allowance of six acres P Cent for roads &c^a.

John Forsyth D.S.

To John Lukens Esquire
Surveyor General.

IN TESTIMONY that the above is a copy of the original remaining on file in the Department of Internal Affairs of Pennsylvania, made conformably to an Act of Assembly approved the 16th day of February, 1833, I have hereunto set my Hand and caused the Seal of said Department to be affixed at Harrisburg, this twelfth day of April 1907.

Isaac P. Brown
Secretary of Internal Affairs.